

# 4100

## SIDE SCAN SONAR SYSTEM

### FEATURES

- Dual frequency
- Lightweight for one person deployment
- Rugged, modular construction for ease of maintenance
- Portable

### APPLICATIONS

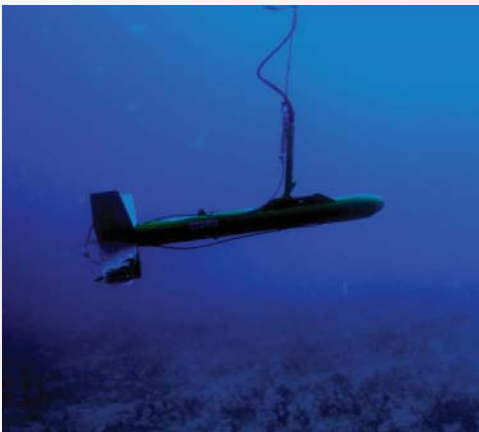
- Hydrographic Surveys
- Geological Surveys
- Cable and Pipeline Surveys
- Channel/Clearance Surveys
- Environmental Surveys



EdgeTech's 4100 Side Scan Sonar System is the long-lasting workhorse of the hydrographic survey community and has been in the marketplace for over 30 years.

The 4100 is a dual frequency 100/500 kHz system that is ideally suited for use in water depths of up to a few hundred meters. A system comes standard with the model 272-TD dual frequency towfish, choice of a portable or 19 inch rack mount topside processor running EdgeTech's DISCOVER software and a customer-specified length of Kevlar or double-armored tow cable; all at an economical price.

The 272-TD towfish is lightweight enough so that it can be deployed by one person which makes this system ideal for use from smaller boats or ones where an onboard handling system is not available. The towfish is equipped as standard with EdgeTech's patented Saf-T-Link recovery system which will prevent the loss of the towfish if it becomes snagged on an obstacle during towing.



For more information please visit [EdgeTech.com](http://EdgeTech.com)

[info@EdgeTech.com](mailto:info@EdgeTech.com) | USA 1.508.291.0057

# 4100

## SIDE SCAN SONAR SYSTEM

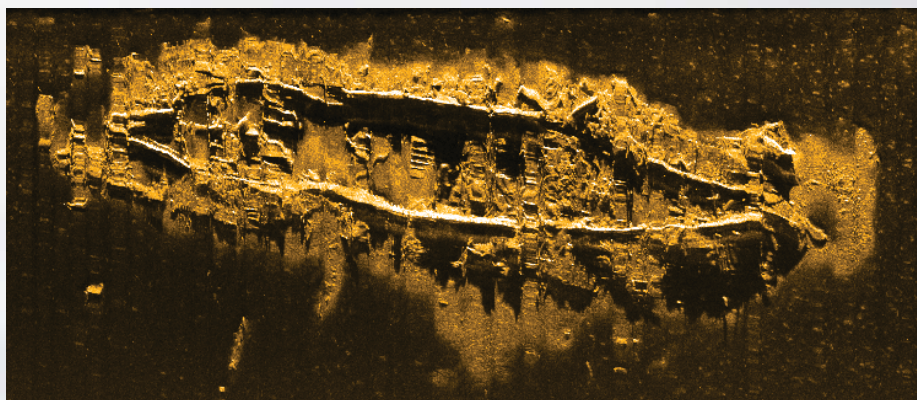
### KEY SPECIFICATIONS

#### 272-TD TOWFISH

Frequency	100/500 kHz
Horizontal Beam Width	100 kHz – 1.2°, 500 kHz – 0.5°
Operating Range (maximum)	100 kHz – 500 meter swath, 500 kHz – 200 meter swath
Diameter	11.4 cm (4.5")
Length	140 cm (55")
Weight (in air)	25 kg (55 lbs)
Weight (in saltwater)	12 kg (26 lbs)
Max Depth Rating	1,000m

#### TOPSIDE PROCESSOR

Hardware	Portable splashproof enclosure or 19 inch rack mount computer
Operating System	Windows XP
Display & Interface	Splashproof laptop or 22" flat panel monitor, keyboard & trackball
Archive	DVD-R/W
File Format	Native JSF or XTF
Output	Ethernet
Power Input	Portable topside: 110/220 VAC or 12 VDC Rack mount topside: 110/220 VAC



For more information please visit [EdgeTech.com](http://EdgeTech.com)

[info@EdgeTech.com](mailto:info@EdgeTech.com) | USA 1.508.291.0057